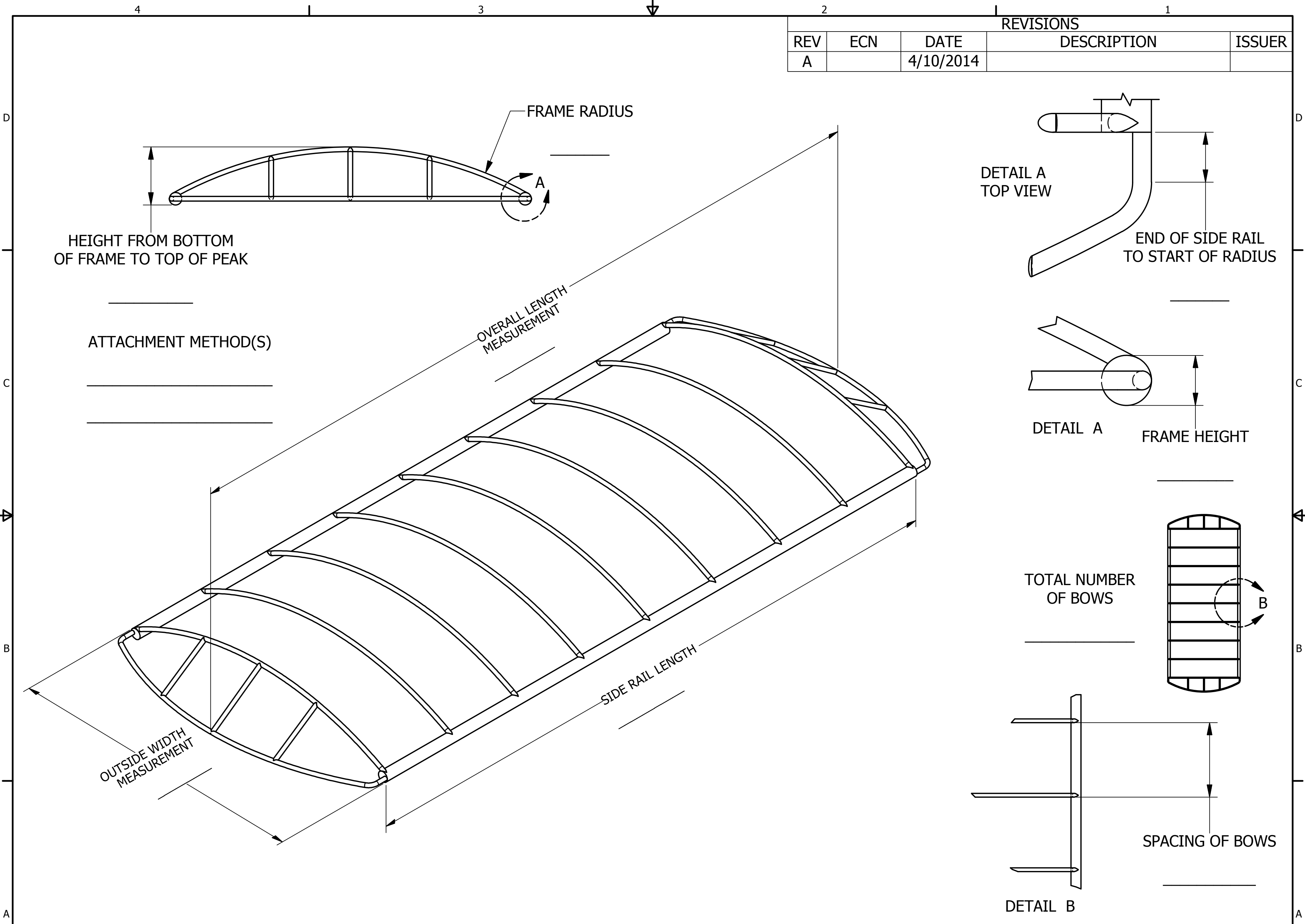


REVISIONS				
REV	ECN	DATE	DESCRIPTION	ISSUER
A		4/10/2014		



HEIGHT FROM BOTTOM OF FRAME TO TOP OF PEAK

FRAME RADIUS

DETAIL A
TOP VIEW

END OF SIDE RAIL TO START OF RADIUS

ATTACHMENT METHOD(S)

OVERALL LENGTH MEASUREMENT

DETAIL A

FRAME HEIGHT

TOTAL NUMBER OF BOWS

B

OUTSIDE WIDTH MEASUREMENT

SIDE RAIL LENGTH

SPACING OF BOWS

DETAIL B

TOLERANCES - UNLESS NOTED

- DECIMAL ±
- FRACTION ±
- ANGLE ±



1314 Walnut St. - Springfield, SD 57062 605-369-6000

TITLE:

GENERIC ROUNDED END FRAME DETAIL

SIZE

C

DRFT:

RML

DATE

4/10/2014

SCALE

SHEET

1

PART NO:

FRAME DETAIL

NOTICE

THIS ILLUSTRATION IS THE PROPERTY OF RUSH-CO, AND MUST NOT BE USED IN ANY WAY DETRIMENTAL TO RUSH-CO'S INTERESTS.

ENGR:

DATE

1

4

3

2

1

D

D

C

C

B

B

A

A