



RUSH-CO

RUSHMORE BUILDINGS

MANUFACTURED BY RUSH-CO

SPRINGFIELD, SD



1.866.776.5617



RUSHMOREBUILDINGS.COM

ABOUT RUSH-CO

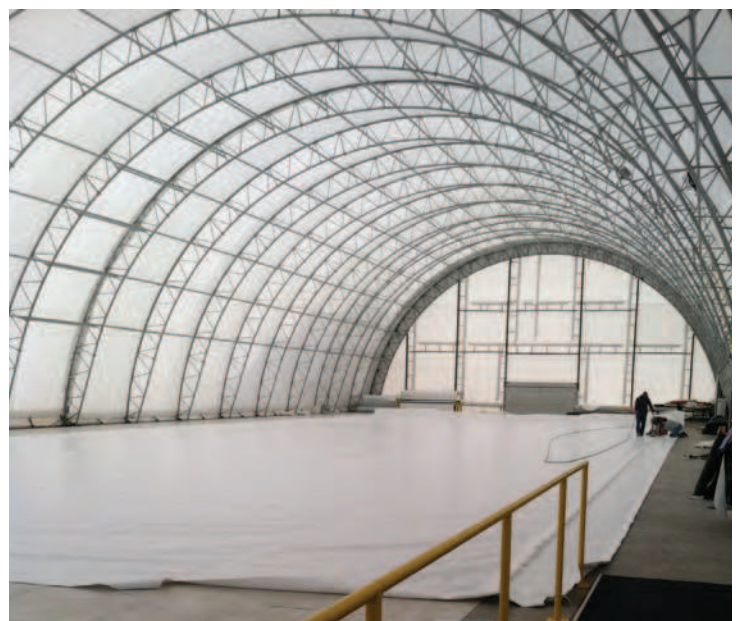
Established in 2009, Rush-Co is a diversified, family owned manufacturing company located in Springfield, South Dakota. Rush-Co can trace its heritage back to 1954 and the Wahpeton Shoe Hospital, later renamed Wahpeton Canvas Company. With over 50 years of experience, the family-owned business designs custom fabric solutions for nearly any problem or application and produces high quality, affordable, and trouble free products for you.

Rush-Co produces marine replacement canopy covers, fabric covered steel buildings, railcar containment covers, agricultural equipment shields, wind energy component covers and custom engineered fabric products of all kinds for industrial customers. For more information about our products give us a call at 1-866-776-5617.



CUSTOM FABRIC SOLUTIONS

Rush-Co Mono-Tube & Truss Buildings	3-5
Cattle/Dairy Facilities	6
Equipment Storage	7
Salt/Fertilizer Storage	8
Hay/Grain Storage	9
Free Standing/Ground Mount Buildings	10-11
Mono-Tube Buildings	12-13
End Wall Options	14-15
Building Options	16-17
Power Ventilation Systems	18
Building Profile Pictures	19



MONO-TUBE BUILDINGS

The Mono-Tube Rushmore Building has been constructed from 2 3/8-inch to 3-inch 12-gauge galvanized tubing to create a strong, affordable and secure environment. This wall mounted building provides a safe environment for a number of applications including machinery, commodities, and general warehousing.

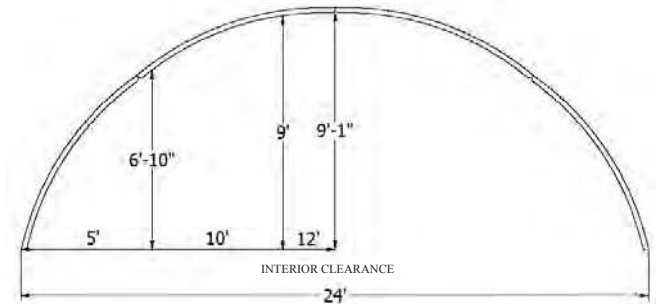
RUSH-Co MAKES REPLACEMENT COVERS FOR ALL BRANDS!

Benefits of the Mono-Tube Building

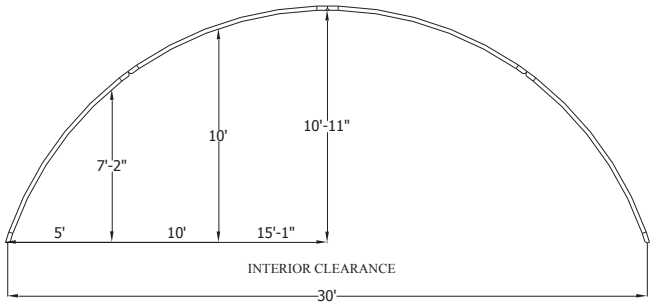
- Easy to assemble
- 12.5 oz woven high-density polyethylene coated fabric cover
- Connecting hardware is zinc-plated to resist corrosion
- Ratchets offer a secure tie-down
- End walls and doors are available
- Cover draws over the framework in minutes
- No internal columns to interfere with moving machinery
- Huge energy saving due to little or no daytime lighting needs
- 15-year limited warranty on the cover and a 5-year limited warranty on the frame
- Low cost per square foot as compared to other building types



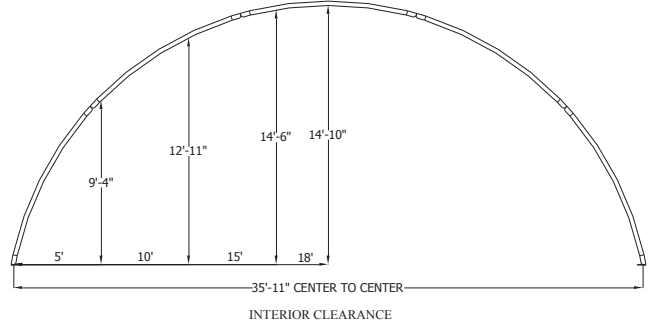
24' MONO-TUBE BUILDING



30' MONO-TUBE BUILDING



36' MONO-TUBE BUILDING



COVERS FOR ALL BRANDS!

TRUSS BUILDINGS

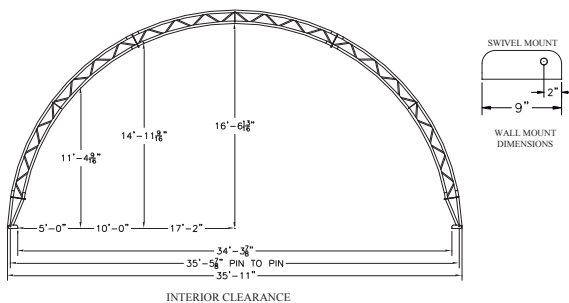
Engineered to meet or exceed local snow and wind loads, this in-line galvanized steel truss building is the workhorse of Rushmore Buildings. These buildings are designed to protect your investments from the fiercest environment. The Rush-Co Truss Building is the best solution for the smart buyer. The Truss Building provides a safe, secure environment for any application — grain, salt, sand, job site equipment, machinery and livestock.

RUSH-CO MAKES REPLACEMENT COVERS FOR ALL BRANDS!

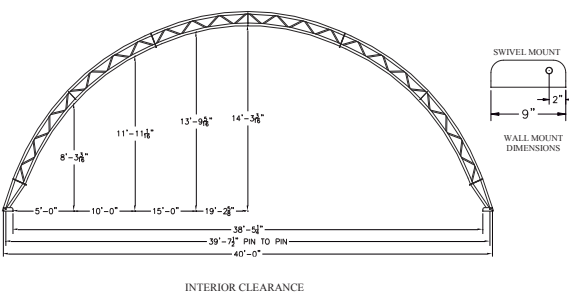
Benefits of the Truss Building

- We can customize buildings for many situations. Our standard widths are 36, 40, 44, 45, 50, 60, 70, 80, 100, 120, and 140 feet.
- 12.5 oz woven high-density polyethylene coated fabric cover
- All connecting hardware and metal components are zinc-plated to resist corrosion
- Ratchets offer a secure tie-down system that offers the most secure hold down system in the industry
- Cover draws over the framework in minutes
- No internal columns to interfere with moving machinery
- Huge energy saving due to little or no daytime lighting needs
- 15-year limited warranty on frame and cover
- Low cost per square foot as compared to other building types
- Offered in hot dipped galvanized for highly corrosive applications such as salt and fertilizer

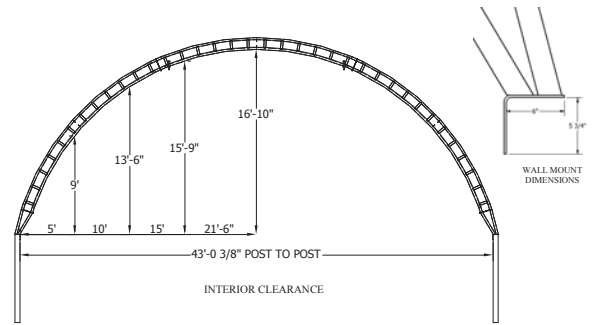
36' TRUSS BUILDING



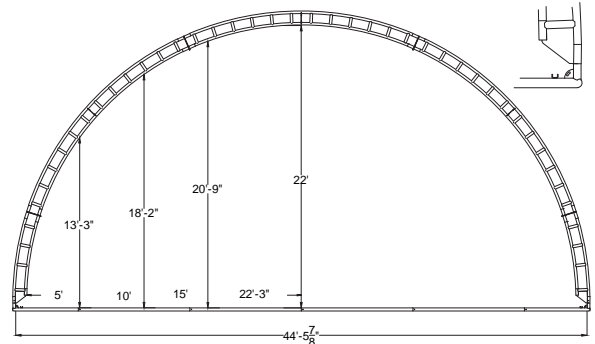
40' TRUSS BUILDING



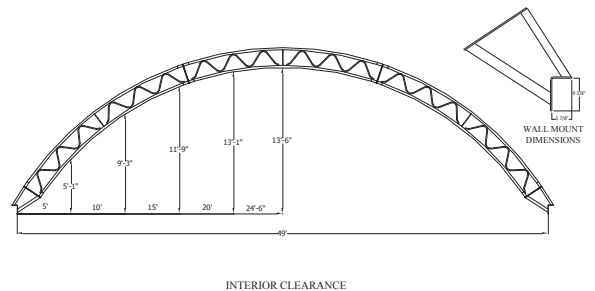
44' TRUSS BUILDING



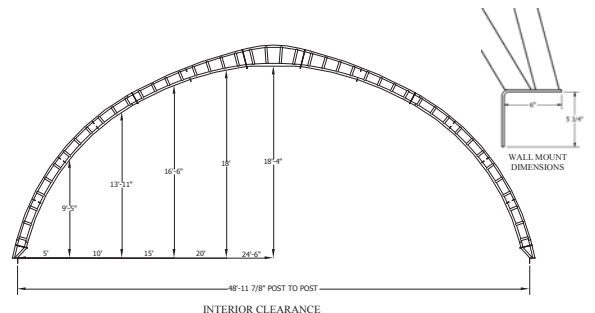
45' TRUSS BUILDING



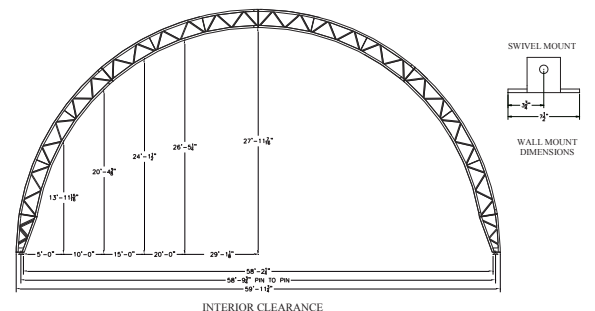
50' LOW TRUSS BUILDING



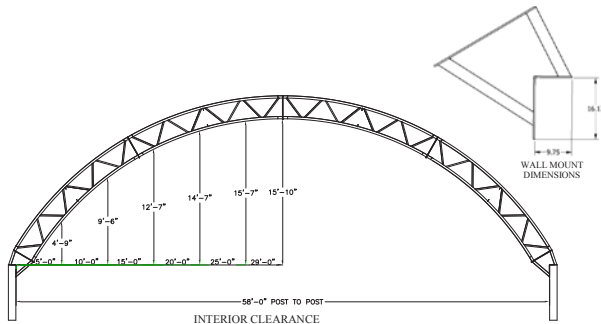
50' TRUSS BUILDING



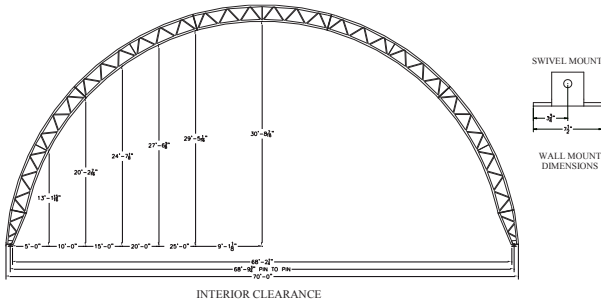
60' HP TRUSS BUILDING



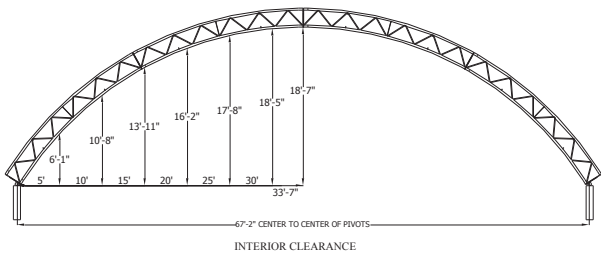
60' TRUSS BUILDING



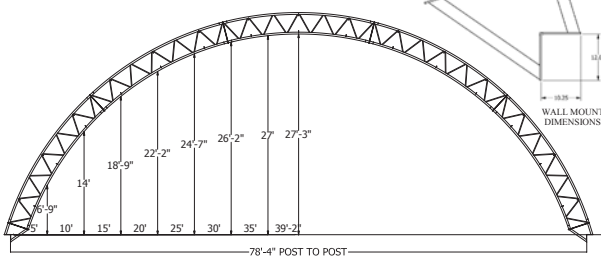
70' HP TRUSS BUILDING



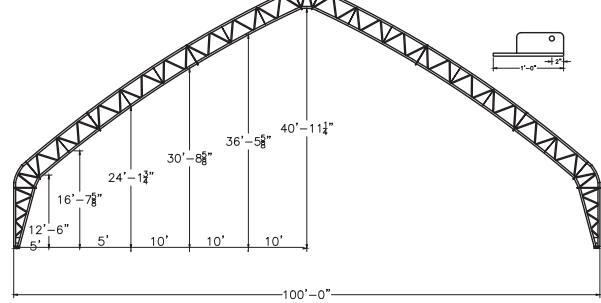
70' TRUSS BUILDING



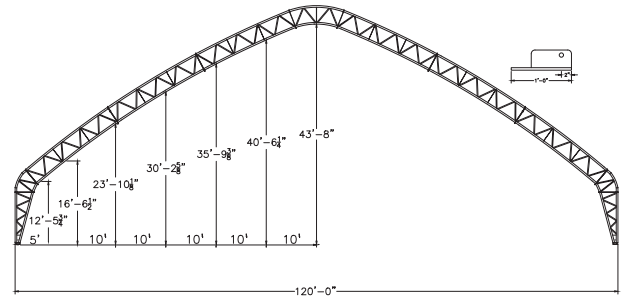
80' TRUSS BUILDING



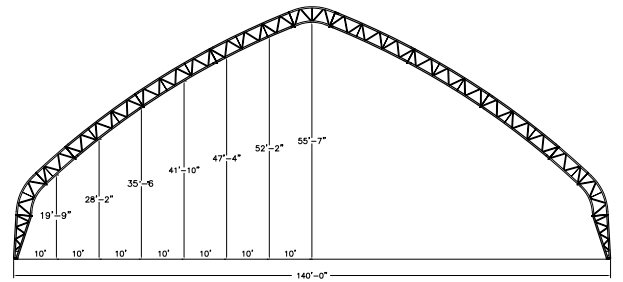
100' TRUSS BUILDING



120' TRUSS BUILDING



140' TRUSS BUILDING



COVERS FOR ALL BRANDS!

• Rush-Co Buildings Catalog • Rush-Co reserves the right to change products as required



**RUSHMORE
BUILDINGS**
provide a **solution** to help
protect your livestock **&**
benefit your **productivity.**



EQUIPMENT STORAGE BUILDINGS

Maintain the value of your equipment by storing it in a Rushmore Building. Protecting your equipment from the extreme elements will preserve the equipments appearance and help maintain its retail value, along with saving you time and money on repairs of bearings, belts, and hoses.

- Quick installation and convenient maintenance
- Fast, affordable protection for your agriculture and multi purpose use
- Can be installed on numerous foundation types to best suite your site and location
- Engineered to offer years of low cost and dependable service



COVERS FOR ALL BRANDS!

WWW.RUSH-CO.COM • Rush-Co Rushmore Buildings Catalog • Rush-Co reserves the right to change products as required

Let Us **Cover** What You Value!

A large blue Quip mobile storage building with a curved roof, housing a large pile of material and a conveyor system. A blue tracked machine is positioned in front of the building.

A large, white, arched industrial building with a metal frame and a red base, situated outdoors. The building has a semi-circular roof and a large, arched entrance. The interior is dark, and the ground in front is paved. The building is supported by concrete pillars and has red structural elements at the base. The sky is overcast.



WWW.RUSH-CO.COM • Rush-Co Buildings Catalog • Rush-Co reserves the right to change products as required

blocks harmful UV rays and is a thermally non-conductive, non-corrosive material.

Protecting your hay/grain from elements is crucial in all seasons regardless of the current market value. Studies have shown that unprotected hay bales can lose up to 30% of their feed value. By maintaining the value of your hay and feed, your return on investment will be much quicker, putting green back in your pocket.



BY **MAINTAINING** THE VALUE OF YOUR **HAY AND FEED**,
YOUR RETURN **INVESTMENT** WILL BE MUCH QUICKER,
PUTTING THE GREEN BACK IN YOUR **POCKET**.



ING
PIC
DA

FREE STANDING/GROUND MOUNT





For pricing options, please request a Quote or call us at 1.866.776.5617

- Easy to relocate when your individual needs change
- Can be built on any flat surface
- 12.5 oz woven high-density polyethylene coated fabric

- Ratchets-and-pipe offer a secure tie down
- Anchored to the ground by 8" x 3' auger ground anchors

CONSTRUCTING buildings
you can depend upon to maintain
the value of your property



Rush-Co reserves the right to change products as required

COVERS FOR ALL BRANDS!

Rush-Co reserves the right to change products as required

Structures can easily
be **modified**
to best suit your **needs**





**Providing a strong, safe environment
for a number of applications**



13

WWW.RUSH-CO.COM • Rush-Co Rushmore Buildings Catalog • Rush-Co reserves the right to change products as required

A large, white, arched Quonset hut stands on a sandy surface under a clear blue sky. The structure features a roll-up door on the right side, which is partially open, revealing the interior. The hut's design is characterized by its smooth, curved roof and metal support structure. A small logo is visible on the upper right portion of the exterior wall.



Roll-up Doors

Operate with a crank handle and u-joint rolling the door from bottom up. Roll-up doors are similar in operation to roll tarp systems on grain trailers.



END OPTIONS

Valance



Solid End



Door End



COVERS FOR ALL BRANDS!

WWW.RUSH-CO.COM • Rush-Co Rushmore Buildings Catalog • Rush-Co reserves the right to change products as required



A photograph showing the interior of a large, arched greenhouse. The structure is covered with a white plastic film. A prominent red and white striped archway is visible in the background. The ground is dark and appears to be dirt or mulch. A wooden bench or walkway runs along the base of the structure. A black car is partially visible on the left side.



5' Awning



Manual Roll-up Curtains

Manual Roll-up Curtain systems utilize a crank handle and u-joint similar to a roll tarp on a grain trailer. Manual curtains typically run in sections of 70' or less. Long runs become cumbersome to roll-up manually.



Ridge Vents



Ridge Vents are most commonly used in livestock applications. They are oval openings that run the length of the building at the peak. Ridge Vents increase natural air flow throughout the buildings.

Rush-Co Electric Curtains



More information on Electric curtains on the next page.



TO SEE THE CURTAIN VIDEO
SCAN HERE



POWER VENTILATION SYSTEMS

Our "pivot-arm technology" (Patent No. 9255418) allows for the affordable and easy operation of ventilation regulation on a variety of buildings at the flip of a switch. This fully automatic system can accommodate buildings up to 600 feet in length per motor system. Most components come preassembled for ease of installation. These Powered Ventilation Systems (PVS) provide superior quality Ag curtains for multiple different applications throughout the industry. The 12.5 oz woven high density polyethylene coated fabric allows natural light into the building and creates an outdoor-like atmosphere while protecting the livestock from the elements.

SYSTEM MODELS

Bottom Drive Two Tube System:

Heights 2' or 4' (Upper Curtain)

- Fabric rolls up on bottom tube
- Single Drive will operate up to 600'
- Most commonly used as upper vent curtain
- Popular for lower cost smaller curtains



Center Drive Three Tube System:

Heights 6' 8' 10' 12' (Lower Curtain)

- Fabric rolls up on center tube
- Single Drive will operate up to 600'

Any Duplex (combination) of Bottom Drive System and/or Center Drive System is readily available for openings up to 12' in height- other sizes can be customized

- When ordered in Duplex the Main Drive Supports are full height with both drives installed.

Ease of Installation & Operation

- Simple drum switch operation - Opens in less than 60 seconds
- System can be set or stored in partially opened positions
- Tubing is swaged to aid with assembly
- Wind tube brackets allow for quicker and safer curtain installation
- Drive assembly comes fully wired and assembled



Durable By Design

- Structural tubing is industrial grade and galvanized inside and out
- Metal brackets are heavier and high strength by design
- All industrial tubing is galvanized and brackets are zinc plated
- Curtain is constructed with UV treated PE fabric and industrial thread
- All components are engineered for industry leading product life
- The operating switch, motor, and electrical are outdoor NEMA rated

Fabric Options

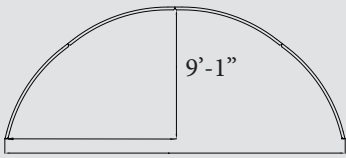
- 12.5oz UV treated PE fabric is recommended for all Systems - Colors: *Fog, White, Red, Green, Brown, Blue, Silver*
- 6oz UV treated PE fabric (value fabric for replacement curtains) - Colors: *Fog, Opaque is Black one side & White one side*
- 18oz PVC is used for industrial divider curtain applications - Colors: *White, Black, Gray, Green, Blue, Tan, Red, Maroon*
- 13oz Mesh is used for hay and industrial curtain applications - Color: *Black*



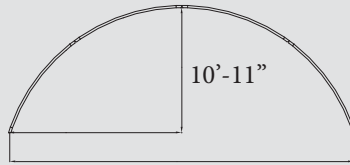


THE perfect solution
TO cover what you
value

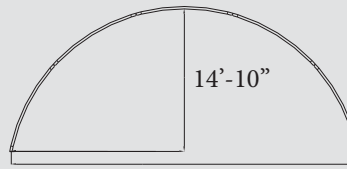




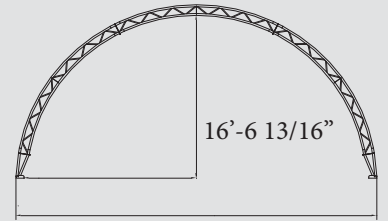
24' MONO-TUBE BUILDING



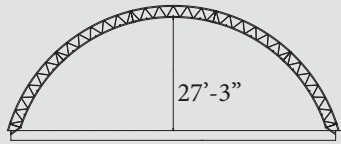
30' MONO-TUBE BUILDING



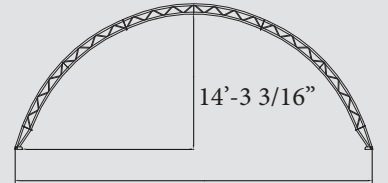
36' MONO-TUBE BUILDING



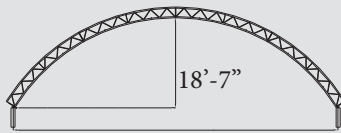
36' WIDE TRUSS BUILDING



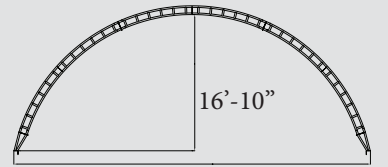
80' WIDE TRUSS BUILDING



40' WIDE TRUSS BUILDING

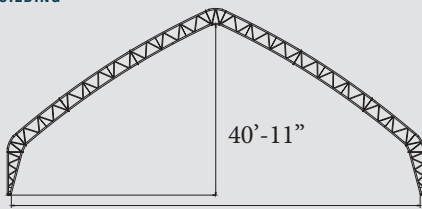


70' WIDE TRUSS BUILDING

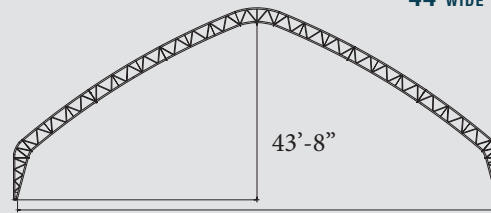


44' WIDE TRUSS BUILDING

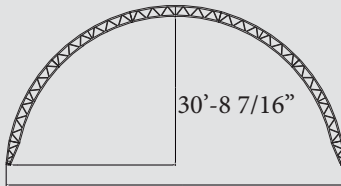
Rushmore Buildings Profiles



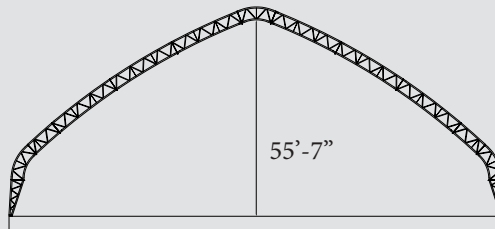
100' WIDE TRUSS BUILDING



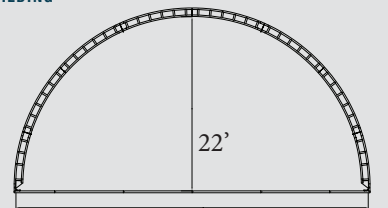
120' WIDE TRUSS BUILDING



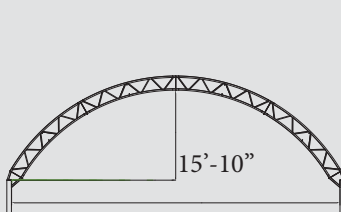
70' WIDE HP TRUSS BUILDING



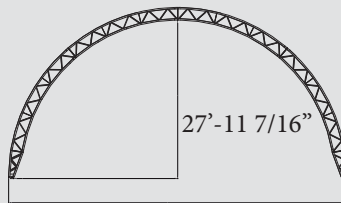
140' WIDE TRUSS BUILDING



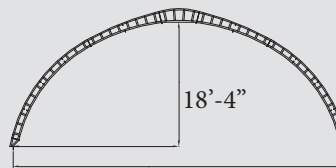
45' WIDE TRUSS BUILDING



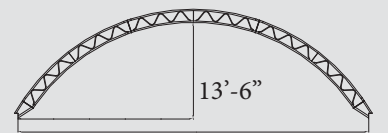
60' WIDE TRUSS BUILDING



60' WIDE HP TRUSS BUILDING



50' WIDE TRUSS BUILDING



50' WIDE LOW PROFILE TRUSS BUILDING



1.866.776.5617

RUSHMOREBUILDINGS.COM