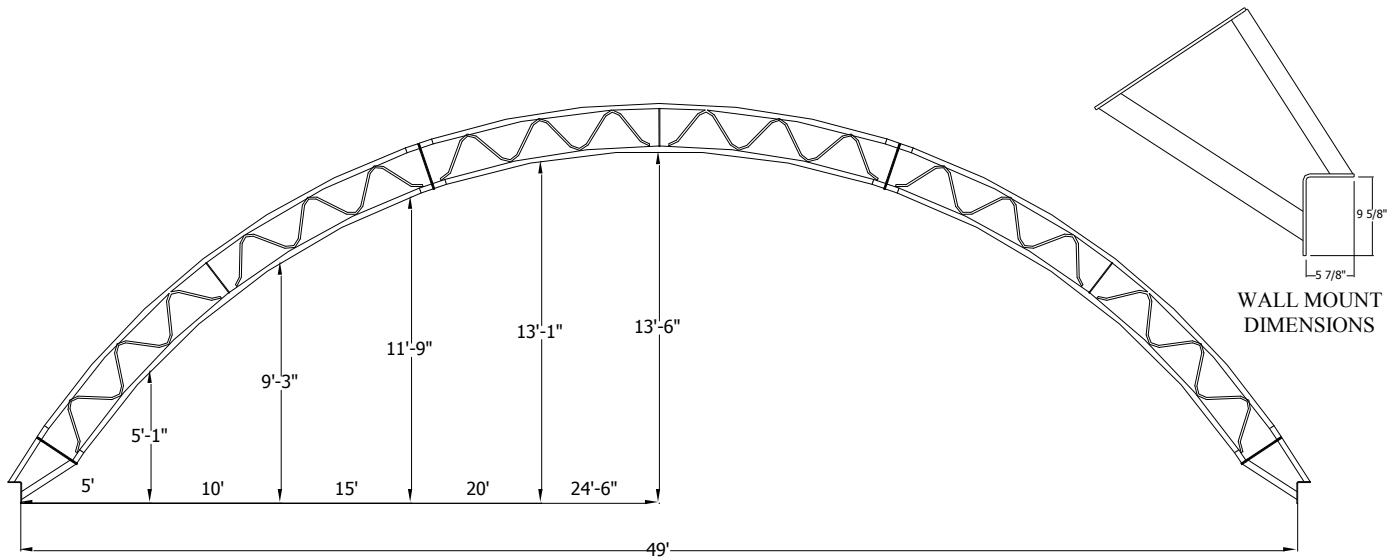


# 50' WIDE LOW PROFILE TRUSS BUILDING



INTERIOR CLEARANCE

## FRAME COMPONENTS

**RAFTERS:** Welded truss construction with 2 3/8-inch **12 gauge** top and bottom chords.

**RAFTERS AND PURLINS:** "X" and/or straight bracing configured to application.

**RAFTER SPACING:** 10-foot standard; 8-foot and 14-foot spacing available.

**PONY WALL MODELS:** Designed to be set on wood or concrete.

Walls must be at least 24-inches high to allow for tensioning, 6" minimum post or wall.

**Included:** 1/2" X 3.5" wood lag screws, assembly bolts, lashing winches with mounting brackets.

**Not included:** posts, rub rail, or concrete anchors.

## FABRIC COVER

**FABRIC:** 12.5 oz tear resistant high density polyethylene with reinforced corners and pockets.

**COLORS:** White, Blue, Green, Red, Tan, Silver, Frost/translucent.

Available as solid colors (some colors may be up charged), with colored canastoga ends, or stripes.

**TENSIONING:** Pipe and 2" lashing winch at each truss.

Standard end tension kit with ratchets spaced at 36"; high tension kit available.

## AVAILABLE OPTIONS

**END WALLS:** Steel uprights with fabric cover; pipe and 2" lashing winch tensioning.

**END WALL SUPPORTS:** Our standard uprights with tabs for customer supplied girts and skin.

**HEADERS & DOORS:** Fabric roll-up doors available.

**RIDGE VENTS:** 8X16 top vent holes, partial or entire length of building.

**AWNING:** 5ft awning greatly extends weather protection for buildings with feed-bunks or open sides.

**SIDE CURTAINS:** Roll-Up curtain to allow ventilation or wind protection.