



# **RUSH-CO**

## **RUSHMORE BUILDINGS**

MANUFACTURED BY RUSH-CO

SPRINGFIELD, SD



1.866.776.5617

[RUSHMOREBUILDINGS.COM](http://RUSHMOREBUILDINGS.COM)



# ABOUT RUSH-CO

Established in 2009, Rush-Co is a diversified, family owned manufacturing company located in Springfield, South Dakota. Rush-Co can trace its heritage back to 1954 and the Wahpeton Shoe Hospital, later renamed Wahpeton Canvas Company. With over 50 years of experience, the family-owned business designs custom fabric solutions for nearly any problem or application and produces high quality, affordable, and trouble free products for you.

Rush-Co produces marine replacement canopy covers, fabric covered steel buildings, agricultural equipment shields, wind energy component covers and custom engineered fabric products of all kinds for industrial customers. For more information about our products give us a call at 1-866-776-5617.



## CUSTOM FABRIC SOLUTIONS

Rush-Co Mono-Tube & Truss Buildings	3-5
Cattle/Dairy Facilities	6
Equipment Storage	7
Salt/Fertilizer Storage	8
Hay/Grain Storage	9
Free Standing/Ground Mount Buildings	10-11
Mono-Tube Buildings	12-13
End Wall Options	14-15
Building Options	16-17
Power Ventilation Systems	18
Building Profile Pictures	19

Rush-Co reserves the right to change products as required

# MONO-TUBE BUILDINGS

The Mono-Tube Rushmore Building has been constructed from 2 3/8-inch to 3-inch 12-gauge galvanized tubing to create a strong, affordable and secure environment. This wall mounted building provides a safe environment for a number of applications including machinery, commodities, and general warehousing.

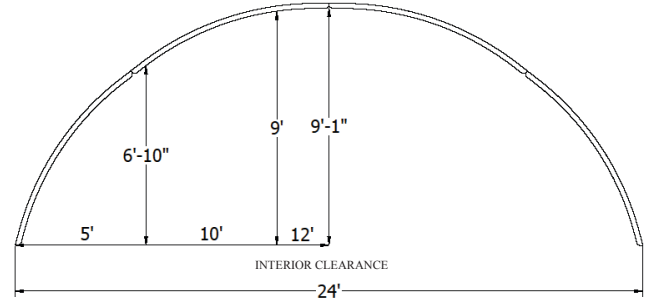
**RUSH-Co MAKES REPLACEMENT COVERS FOR ALL BRANDS!**

## Benefits of the Mono-Tube Building

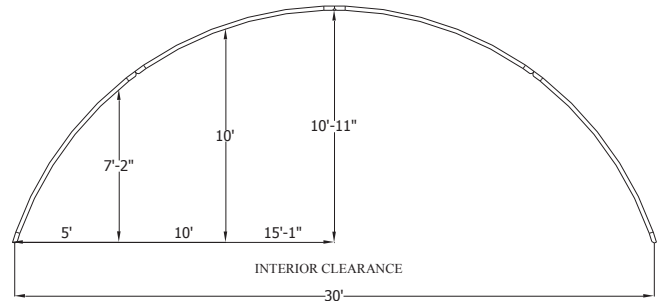
- Easy to assemble
- 12.5 oz woven high-density polyethylene coated fabric cover
- Connecting hardware is zinc-plated to resist corrosion
- Ratchets offer a secure tie-down
- End walls and doors are available
- Cover draws over the framework in minutes
- No internal columns to interfere with moving machinery
- Huge energy saving due to little or no daytime lighting needs
- 15-year limited warranty on the cover and a 5-year limited warranty on the frame
- Low cost per square foot as compared to other building types



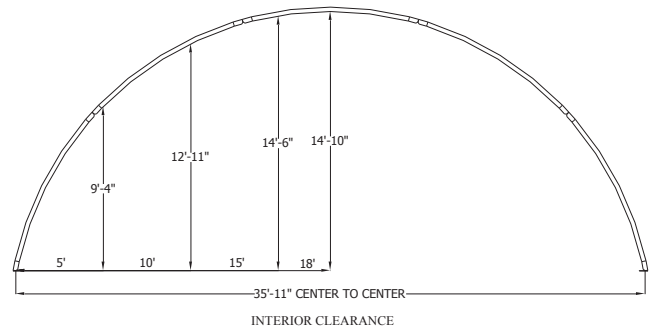
## 24' MONO-TUBE BUILDING



## 30' MONO-TUBE BUILDING



## 36' MONO-TUBE BUILDING





# TRUSS BUILDINGS

Engineered to meet or exceed local snow and wind loads, this in-line galvanized steel truss building is the workhorse of Rushmore Buildings. These buildings are designed to protect your investments from the fiercest environment. The Rush-Co Truss Building is the best solution for the smart buyer. The Truss Building provides a safe, secure environment for any application — grain, salt, sand, job site equipment, machinery and livestock.

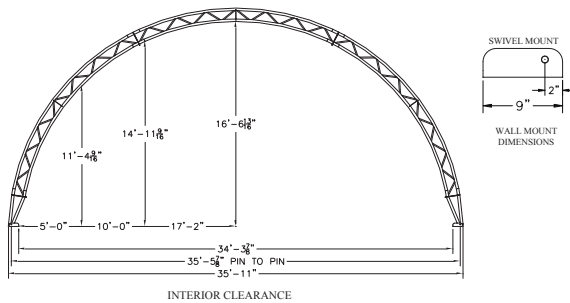
## RUSH-CO MAKES REPLACEMENT COVERS FOR ALL BRANDS!

### Benefits of the Truss Building

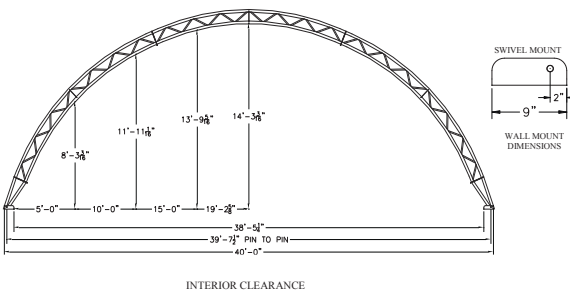
- We can customize buildings for many situations. Our standard widths are 36, 40, 44, 45, 50, 60, 70, 80, 100, 120, and 140 feet.
- 12.5 oz woven high-density polyethylene coated fabric cover
- All connecting hardware and metal components are zinc-plated to resist corrosion
- Ratchets offer a secure tie-down system that offers the most secure hold down system in the industry
- Cover draws over the framework in minutes
- No internal columns to interfere with moving machinery
- Huge energy saving due to little or no daytime lighting needs
- 15-year limited warranty on frame and cover
- Low cost per square foot as compared to other building types
- Offered in hot dipped galvanized for highly corrosive applications such as salt and fertilizer

WWW.RUSH-CO.COM • Rush-Co Rushmore Buildings Catalog • Rush-Co reserves the right to change products as required

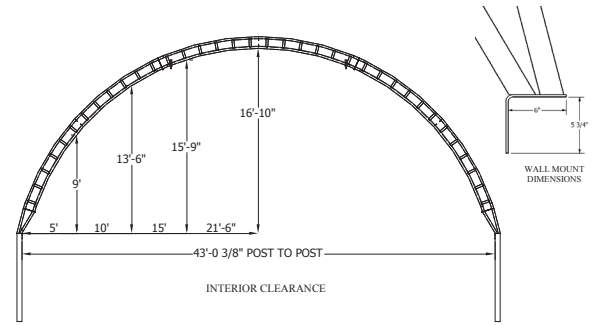
36' TRUSS BUILDING



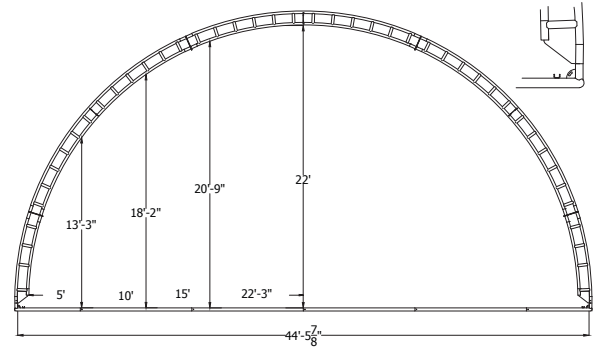
40' TRUSS BUILDING



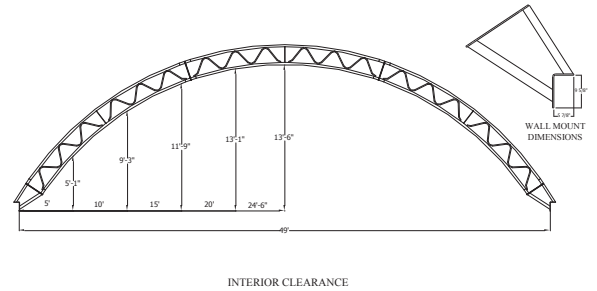
44' TRUSS BUILDING



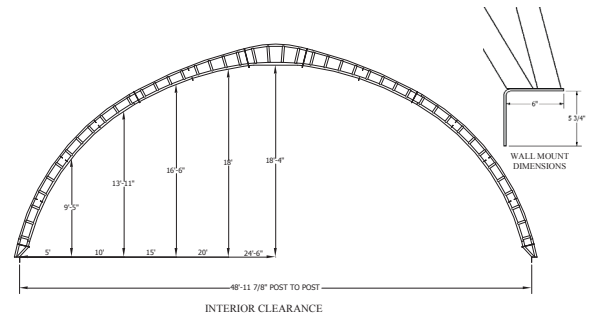
45' TRUSS BUILDING



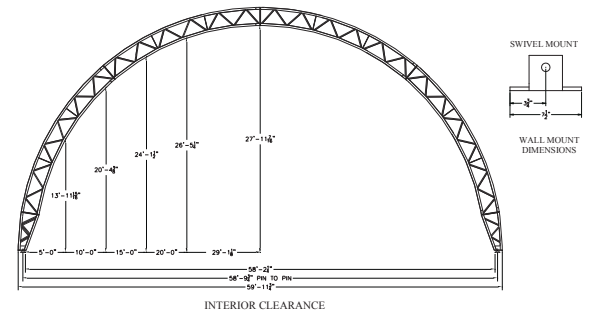
50' LOW TRUSS BUILDING



50' TRUSS BUILDING

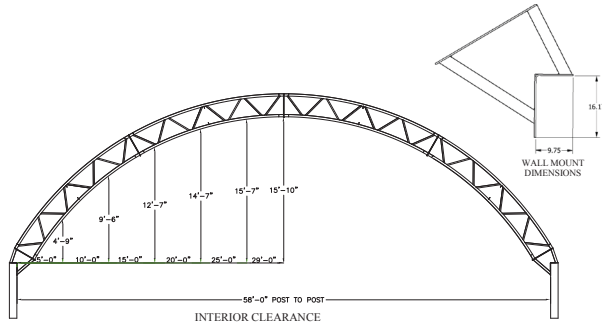


60' HP TRUSS BUILDING

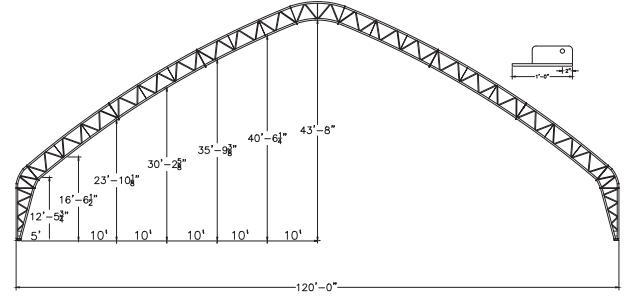




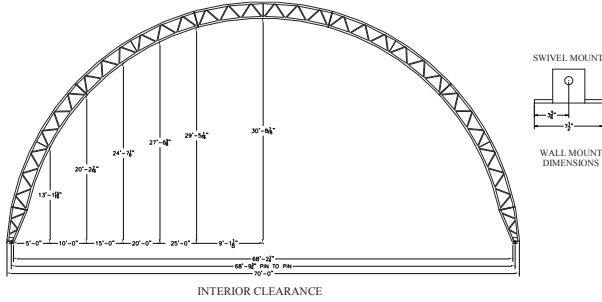
**60'** TRUSS BUILDING



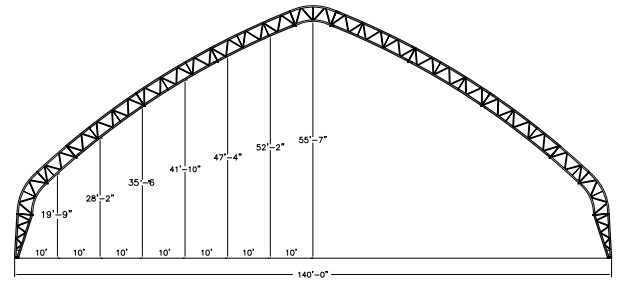
**120'** TRUSS BUILDING



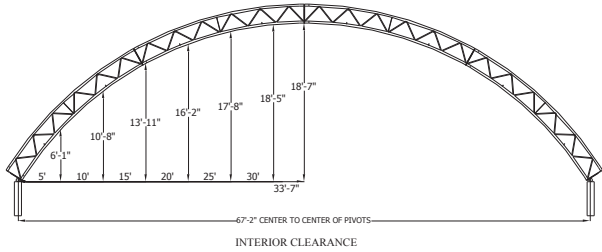
**70' HP** TRUSS BUILDING



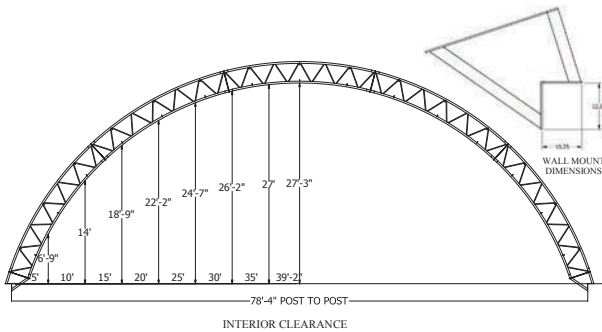
**140'** TRUSS BUILDING



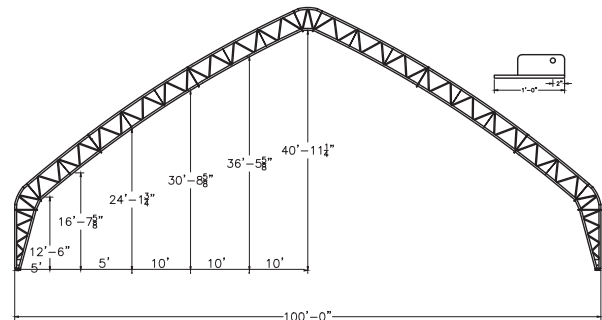
**70'** TRUSS BUILDING



**80'** TRUSS BUILDING



**100'** TRUSS BUILDING





# CATTLE/DAIRY FACILITIES

Rushmore Buildings have become popular among livestock producers due to their cost and labor saving features. As beef and dairy operations continue to grow and expand, larger and more economical solutions are needed for housing your livestock. Providing a safe and secure environment for your livestock is the goal of any feedlot manager.

Comfort is the key to any beef operation, for your herd as well as for yourself. With a building from Rushmore Buildings, you can take reassurance in the fact that your cattle will be less stressed, more relaxed and a lot more comfortable than in an outdoor feedlot. The casual, positive environment means your cattle will have a greater chance at higher, faster weight gain, and that can mean more profit for you.



**RUSHMORE BUILDINGS**  
provide a **solution** to help  
**protect your livestock &**  
**benefit your productivity.**



WWW.RUSH-CO.COM • Rush-Co Rushmore Buildings Catalog • Rush-Co reserves the right to change products as required



# EQUIPMENT STORAGE BUILDINGS

Maintain the value of your equipment by storing it in a Rushmore Building. Protecting your equipment from the extreme elements will preserve the equipments appearance and help maintain its retail value, along with saving you time and money on repairs of bearings, belts, and hoses.

- Quick installation and convenient maintenance
- Fast, affordable protection for your agriculture and multi purpose use
- Can be installed on numerous foundation types to best suite your site and location
- Engineered to offer years of low cost and dependable service



## COVERS FOR ALL BRANDS!

WWW.RUSH-CO.COM • Rush-Co Rushmore Buildings Catalog • Rush-Co reserves the right to change products as required



# SALT/FERTILIZER STORAGE

Let us Cover what You Value!



Our steel framed, fabric-covered buildings are an economical solution to cover what you value for additional storage and space.

Protecting your commodities from the elements is crucial in all seasons regardless of the current market value. Rushmore Buildings free-span interior ensures maximum useable space for salt and fertilizer storage with increasing maneuverability inside the building. The natural light provided by our fabric cover on Rushmore Buildings allow for energy savings throughout the year. Our hot dipped steel truss provides great protection against highly corrosive salt and fertilizer.



Rush-Co reserves the right to change products as required.

Rush-Co Rushmore Buildings Catalog

WWW.RUSH-CO.COM



# HAY/GRAIN STORAGE

Protect the value of your grain by storing it in a Rushmore Building. Flat surface grain storage is becoming increasingly more popular; when not in use for grain, your building can also be used to store fertilizer or large equipment.

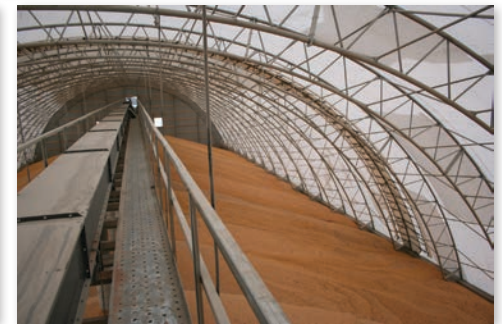
Rushmore Buildings are engineered with a clear span design to accommodate overhead or high clearance grain handling equipment such as augers or conveyors to distribute grain throughout the structure. Our high density polyethylene cover

blocks harmful UV rays and is a thermally non-conductive, non-corrosive material.

Protecting your hay/grain from elements is crucial in all seasons regardless of the current market value. Studies have shown that unprotected hay bales can lose up to 30% of their feed value. By maintaining the value of your hay and feed, your return on investment will be much quicker, putting green back in your pocket.



**BY MAINTAINING THE VALUE OF YOUR HAY AND FEED, YOUR RETURN INVESTMENT WILL BE MUCH QUICKER, PUTTING THE GREEN BACK IN YOUR POCKET.**



# COVERS FOR ALL BRANDS!

WWW.RUSH-CO.COM • Rush-Co Rushmore Buildings Catalog • Rush-Co reserves the right to change products as required

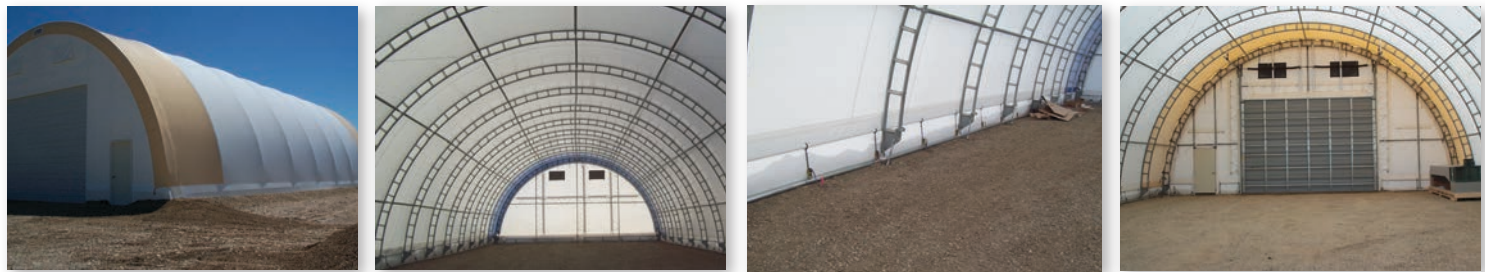


# FREE STANDING/GROUND MOUNT

WWW.RUSH-CO.COM • Rush-Co Rushmore Buildings Catalog • Rush-Co reserves the right to change products as required



**RUSHMORE BUILDINGS**  
saving you time and money by  
protecting your vehicles and machinery





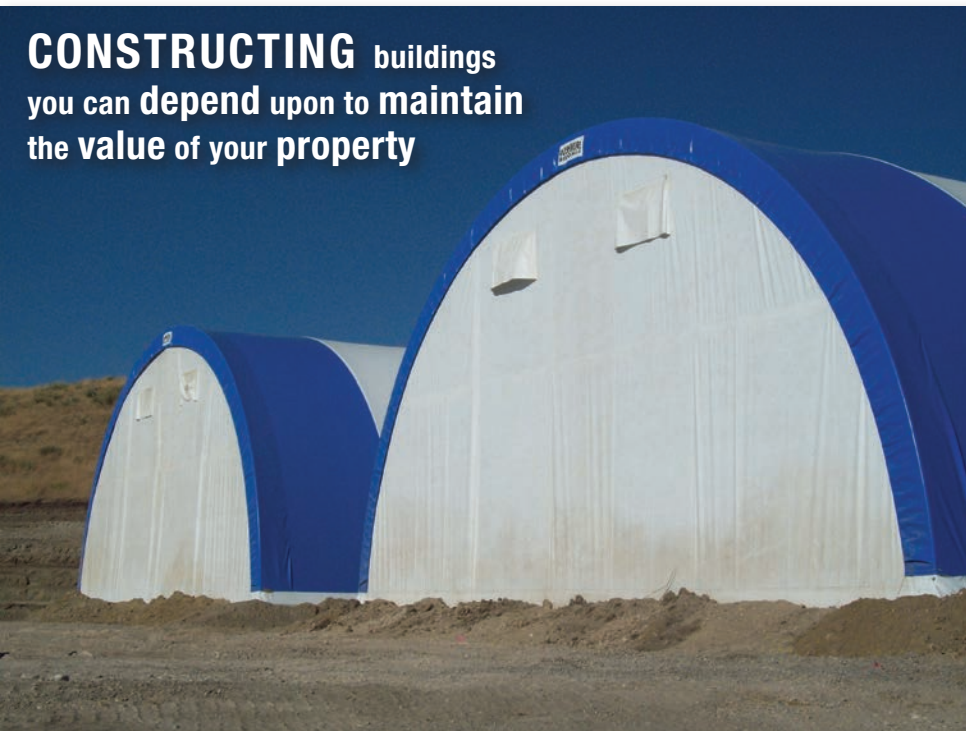


This temporary Rushmore Building combines a heavy rigid truss and a high quality cover which is great for storing and protecting vehicles and machinery. This portable building allows for quick and easy relocating.

For pricing options, please request a Quote or call us at 1.866.776.5617

### Benefits of the Free-Standing Building

- Easy to relocate when your individual needs change
- Can be built on any flat surface
- 12.5 oz woven high-density polyethylene coated fabric
- Ratchets-and-pipe offer a secure tie down
- Anchored to the ground by 8" x 3' auger ground anchors



**CONSTRUCTING** buildings you can depend upon to maintain the value of your property





# MONO-TUBE BUILDINGS

Structures can easily  
be modified  
to best suit your needs



Rush-Co reserves the right to change products as required

Rush-Co Rushmore Buildings Catalog

WWW.RUSH-CO.COM





Providing a strong, safe environment  
for a number of applications





# END WALL OPTIONS

## Fabric Accordion Doors

Rush-Co offers two styles of Accordion Doors. They both offer a cost effective door solution for any application.

**The Eco – Accordion Door** operates with a pulley/cable/winch system and opens like a traditional door from bottom up.

**The Vent – Accordion Door** operates with a pulley/cable/winch system and can open from bottom/up or it can also be lowered from the top/down. This style of door is often used for end wall ventilation.



## Steel Roll-up/Garage Doors (dealer supplied)

Standard garage doors and steel roll-up doors work great in our tension fabric structures. Your local dealer can source almost any size in these particular styles of doors.



Rush-Co reserves the right to change products as required

Rush-Co Rushmore Buildings Catalog

WWW.RUSH-CO.COM



### Roll-up Doors

Operate with a crank handle and u-joint rolling the door from bottom up. Roll-up doors are similar in operation to roll tarp systems on grain trailers.



### END OPTIONS

#### Valance



#### Solid End



#### Door End



WWW.RUSH-CO.COM • Rush-Co Rushmore Buildings Catalog • Rush-Co reserves the right to change products as required



# BUILDING OPTIONS

## Solid Mesh Vent Kit



## Mesh Vent with Weather Flap Kit

4' x 2' mesh vents with weather flaps sewn on the outside of the end wall. The flap is sewn on the top and two sides allowing ventilation out the bottom of the flap.



WWW.RUSH-CO.COM • Rush-Co Rushmore Buildings Catalog • Rush-Co reserves the right to change products as required



## 5' Awning



## Manual Roll-up Curtains

Manual Roll-up Curtain systems utilize a crank handle and u-joint similar to a roll tarp on a grain trailer. Manual curtains typically run in sections of 70' or less. Long runs become cumbersome to roll-up manually.



## Ridge Vents

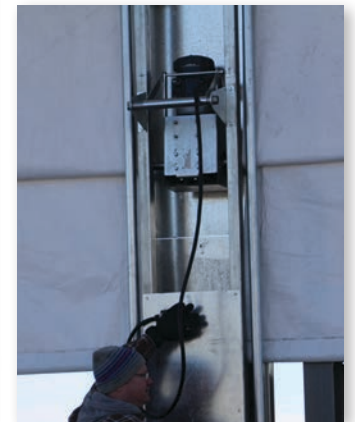


Ridge Vents are most commonly used in livestock applications. They are oval openings that run the length of the building at the peak. Ridge Vents increase natural air flow throughout the buildings.

## Rush-Co Electric Curtains



More information on Electric curtains on the next page.





# POWER VENTILATION SYSTEMS

TO SEE THE CURTAIN VIDEO  
SCAN HERE



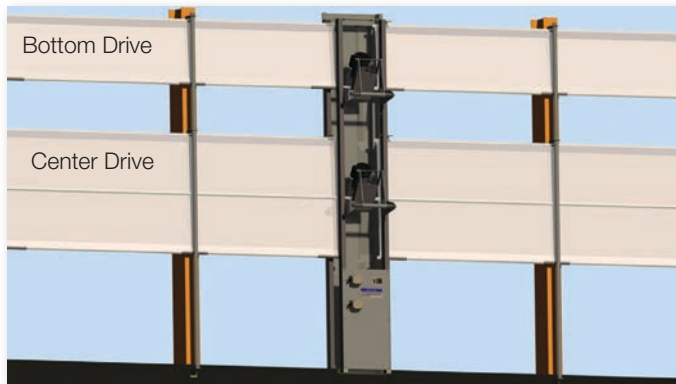
Our "pivot-arm technology" (Patent No. 9255418) allows for the affordable and easy operation of ventilation regulation on a variety of buildings at the flip of a switch. This fully automatic system can accommodate buildings up to 600 feet in length per motor system. Most components come preassembled for ease of installation. These Powered Ventilation Systems (PVS) provide superior quality Ag curtains for multiple different applications throughout the industry. The 12.5 oz woven high density polyethylene coated fabric allows natural light into the building and creates an outdoor-like atmosphere while protecting the livestock from the elements.

## SYSTEM MODELS

### Bottom Drive Two Tube System:

Heights 2' or 4' (Upper Curtain)

- Fabric rolls up on bottom tube
- Single Drive will operate up to 600'
- Most commonly used as upper vent curtain
- Popular for lower cost smaller curtains



### Center Drive Three Tube System:

Heights 6' 8' 10' 12' (Lower Curtain)

- Fabric rolls up on center tube
- Single Drive will operate up to 600'

Any Duplex (combination) of Bottom Drive System and/or Center Drive System is readily available for openings up to 12' in height- other sizes can be customized

- When ordered in Duplex the Main Drive Supports are full height with both drives installed.

## Ease of Installation & Operation

- Simple drum switch operation - Opens in less than 60 seconds
- System can be set or stored in partially opened positions
- Tubing is swaged to aid with assembly
- Wind tube brackets allow for quicker and safer curtain installation
- Drive assembly comes fully wired and assembled



## Durable By Design

- Structural tubing is industrial grade and galvanized inside and out
- Metal brackets are heavier and high strength by design
- All industrial tubing is galvanized and brackets are zinc plated
- Curtain is constructed with UV treated PE fabric and industrial thread
- All components are engineered for industry leading product life
- The operating switch, motor, and electrical are outdoor NEMA rated

## Fabric Options

- 12.5oz UV treated PE fabric is recommended for all Systems - Colors: *Fog, White, Red, Green, Brown, Blue, Silver*
- 6oz UV treated PE fabric (value fabric for replacement curtains) - Colors: *Fog, Opaque is Black one side & White one side*
- 18oz PVC is used for industrial divider curtain applications - Colors: *White, Black, Gray, Green, Blue, Tan, Red, Maroon*
- 13oz Mesh is used for hay and industrial curtain applications - Color: *Black*







24' MONO-TUBE BUILDING



30' MONO-TUBE BUILDING



36' MONO-TUBE BUILDING



36' WIDE TRUSS BUILDING



80' WIDE TRUSS BUILDING

THE perfect solution  
TO cover what you  
value ever



40' WIDE TRUSS BUILDING



70' WIDE TRUSS BUILDING



44' WIDE TRUSS BUILDING



70' WIDE HP TRUSS BUILDING



100' WIDE TRUSS BUILDING | 120' WIDE TRUSS BUILDING | 140' WIDE TRUSS BUILDING



45' WIDE TRUSS BUILDING



60' WIDE HP TRUSS BUILDING



60' WIDE TRUSS BUILDING



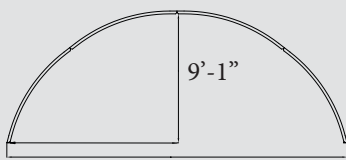
50' WIDE TRUSS BUILDING



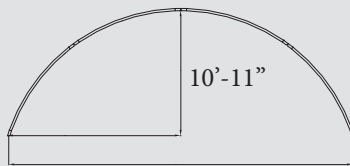
50' WIDE LOW PROFILE TRUSS BUILDING

WWW.RUSH-CO.COM • Rush-Co Rushmore Buildings Catalog • Rush-Co reserves the right to change products as required

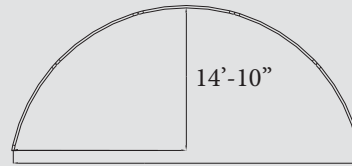




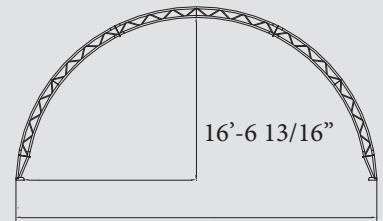
24' MONO-TUBE BUILDING



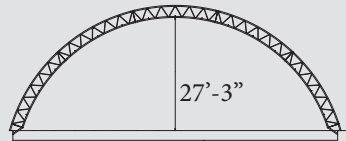
30' MONO-TUBE BUILDING



36' MONO-TUBE BUILDING

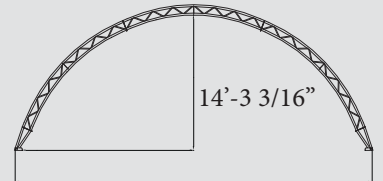


36' WIDE TRUSS BUILDING

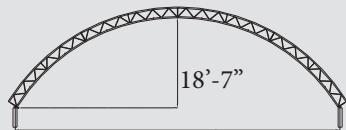


80' WIDE TRUSS BUILDING

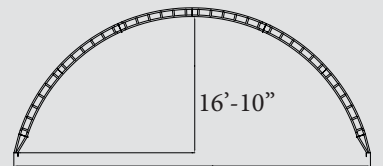
# Rushmore Buildings Profiles



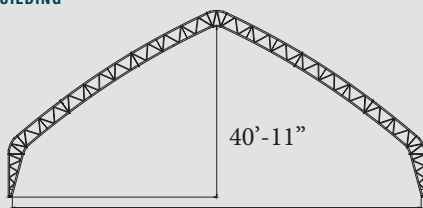
40' WIDE TRUSS BUILDING



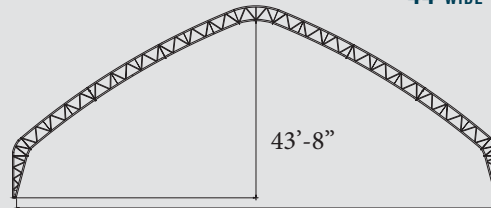
70' WIDE TRUSS BUILDING



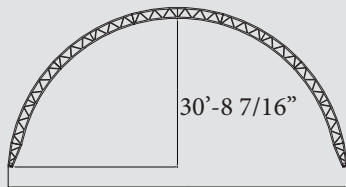
44' WIDE TRUSS BUILDING



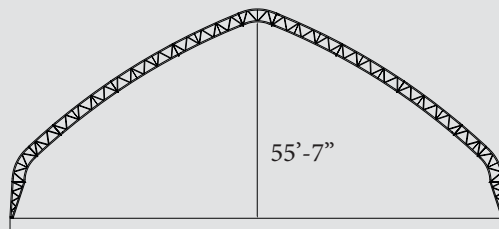
100' WIDE TRUSS BUILDING



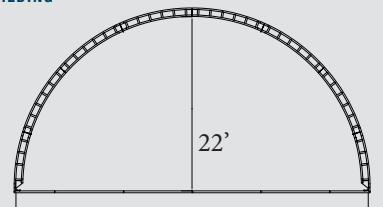
120' WIDE TRUSS BUILDING



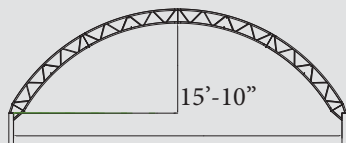
70' WIDE HP TRUSS BUILDING



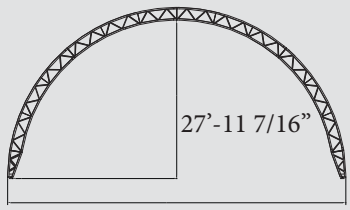
140' WIDE TRUSS BUILDING



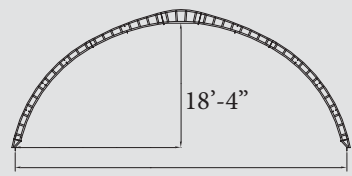
45' WIDE TRUSS BUILDING



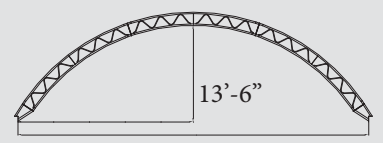
60' WIDE TRUSS BUILDING



60' WIDE HP TRUSS BUILDING



50' WIDE TRUSS BUILDING



50' WIDE LOW PROFILE TRUSS BUILDING

1.866.776.5617



RUSHMOREBUILDINGS.COM